

Introduction to MAB Kargo



About Us

MAB Kargo Sdn Bhd is the air cargo arm of Malaysia Airlines, and subsidiary of the Malaysia Aviation Group (MAG), a global aviation group with subsidiaries and equity investments organised into four distinct business segments: Air Transportation Services, Ground Services, Aircraft Leasing and Talent Development. MASKargo operates three A330-200F freighters from their home base in KLIA. MASKargo offers a range of services in the air logistics trade, including belly space capacity which serves almost 100 destinations worldwide as well as warehouse facilities in KLIA and Penang International Airport.

Vision

To be the preferred air cargo carrier with world class facilities and offerings

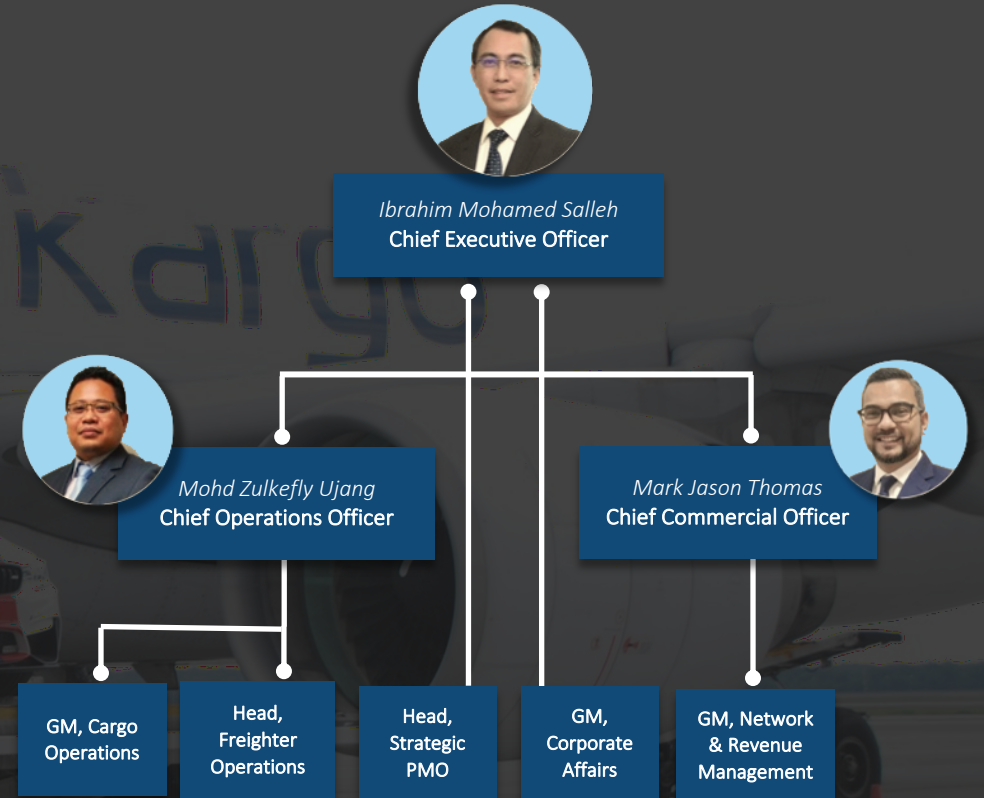
Mission

To have a steady state of profitability and to strengthen partnerships

Goal

To remain as the leading air cargo carrier in Malaysia by providing excellent services anchoring on digitalization and to strive towards profitability

Organization Chart



Key Business

Air Freight



Ground Handling



- Import – breakdown of cargo & release of cargo
- Export – acceptance & build up of cargo
- Transshipment handling
- Airside handling
- Document handling
- Unit Load Devices (ULD) handling



- Perishable cargo handling (inclusive of DGR)
 - Halal logistics
 - Cold room facilities
- Live animal
- Express handling
 - Valuable (VAL) cargo handling
 - Vulnerable (VUL) cargo handling
 - Mail handling

Products & Services

Carrier



Warehouse



Loyalty



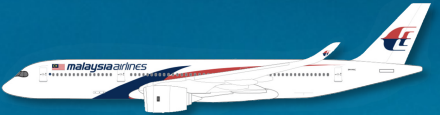
High Alert



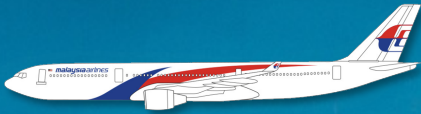
Fleet Size



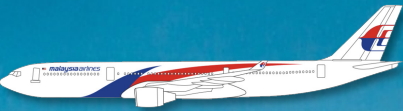
A380-800 **x6**



A350-900 **x6**



A330-300 **x6**



A330-200 **x6**



B737-800 **x48**



AIRBUS
A330-200F

Capacity: 60 tons
Number: 3 freighters

Network Coverage

Belly

Freighter

ASEAN

Indonesia: **CGK, DPS, SUB, KNO**
Singapore: **SIN**
Thailand: **BKK**
Vietnam: **HAN, SGN**
Philippines: **MNL**
Myanmar: **RGN**
Brunei: **BWN**
Cambodia: **PNH, REP**

AU/NZ

Australia: **SYD, MEL, ADL, BNE, PER**
New Zealand: **AKL**

ORIENT

China: **CAN, CKG, CTU, FOC, HAK, WUH, NKG, PEK, SYX, XMN, PVG**
Hong Kong: **HKG**
Taiwan: **TPE**
Japan: **NRT, KIX**
Korea: **ICN**

DOMESTIC

Malaysia: **BKI, KCH, PEN, LBU**

EUROPE & UK

London: **LHR**

MESA

India: **BOM, DEL, MAA, HYD, BLR, TRX, COK**
Nepal: **KTM**
Bangladesh: **DAC**
Sri Lanka: **CMB**
Middle East: **JED, MED, RUH**

AMS

DWC

BOM

DEL

BLR

MAA

HKG

PVG

CAN

HAN

SGN

LBU

KUL

MNL

BKI

KCH

KUL

SYD

Free Commercial Zone **KLIA**

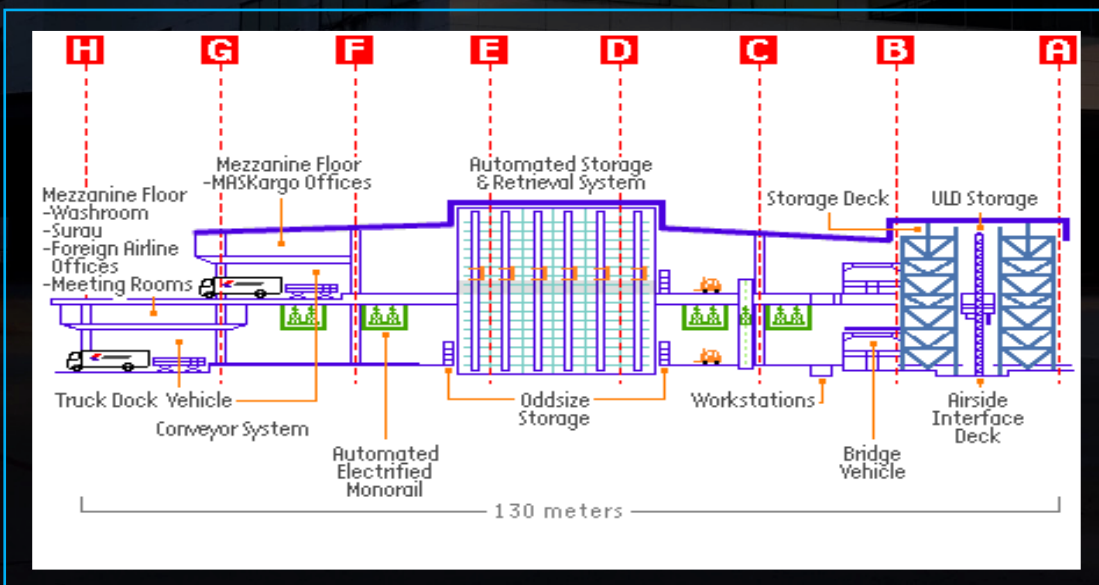
Advanced Cargo Centre (ACC)

Warehouse Size

130 x 500m

Design Capacity

1 million tons per annum



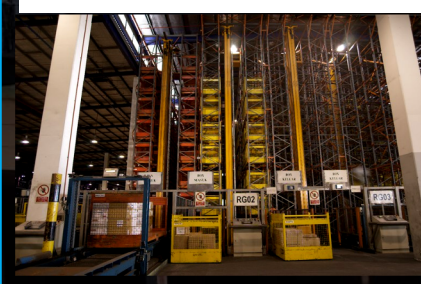
CSS Elevated Transfer Vehicle



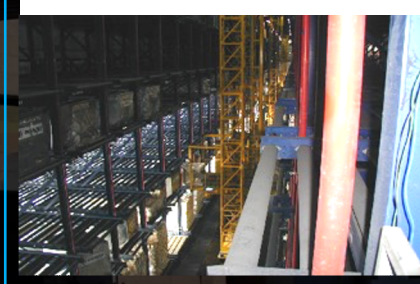
1st Floor ACC: Import and 20 Hoist



Storage System (BSS)



CSS Stacker Crane



Bin / Box Storage System



Container Storage System (CSS)





谢谢
terima
kasih
merci

maskargo.com